



Fall 2022
Newsletter


WE HAVE LIFTOFF

**NASA's Artemis Launch was a great success.
We hope these resources continue to fuel your
classroom missions.**

In this edition:

- **NASA Spotlight Challenge Land Detectives**
- **NEW Engineering Guides**
- **Shower Clock and Boomerang Engineering Design Challenges**
- **Call for Student Earth Day 2023 Presentations**
- **Partner Resources**

NASA Spotlite Design Challenge: Land Detectives



The challenge: As NASA Land Detectives, you are challenged to gather and share evidence to confront misconceptions about Earth's land cover. Land cover is what is on Earth's surface, such as trees, grass, pavement, and buildings.



Steps to produce a NASA Spotlite

STEP 1:

Select the misconception you will investigate.

STEP 2:

Choose one CLAIM to refute or disprove one misconception.

STEP 3:

Investigate to gather EVIDENCE and test your CLAIM.

STEP 4:

Plan, create, and publish your video.

Join NASA eClips and the NASA Earth Science Education Collaborative in the Land Detectives NASA Spotlite Design Challenge.

Learn More: <https://bit.ly/InfoeClipsSpotliteChallenge>

Register student production teams here: <https://bit.ly/SpotliteRegister>

NEW!

Engineering Guides

These open-ended packets guide learners through the engineering design process and can be used with any challenge.

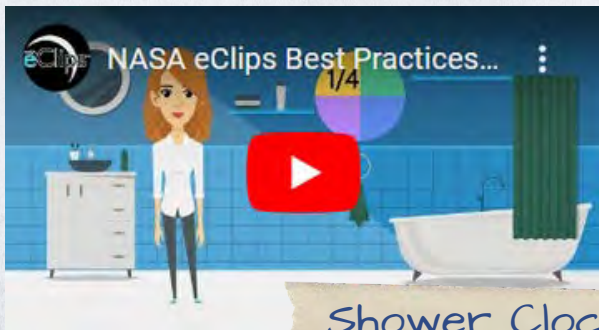


[Learn More](#)

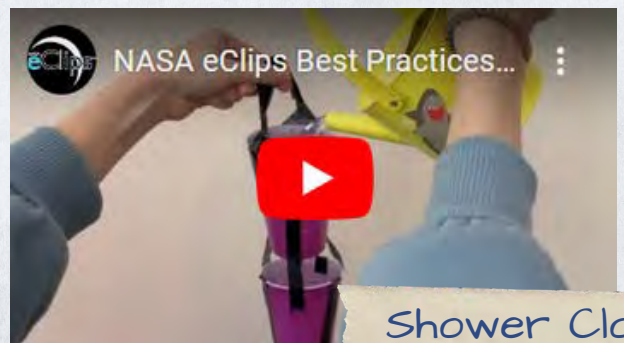
For more information please contact Joan Harper-Neely at Joan.Harper-Neely@nianet.org

Engineering Challenges

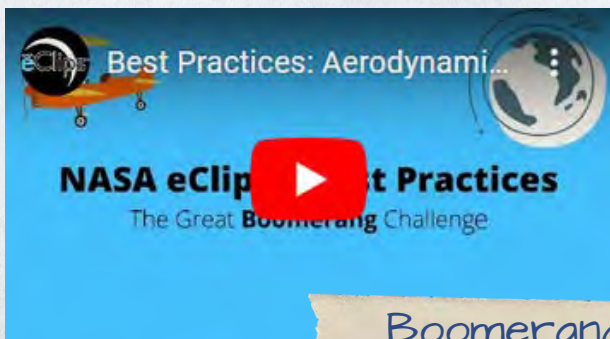
How-to and Best Practice Videos: Shower Clock and Boomerang Engineering Challenges



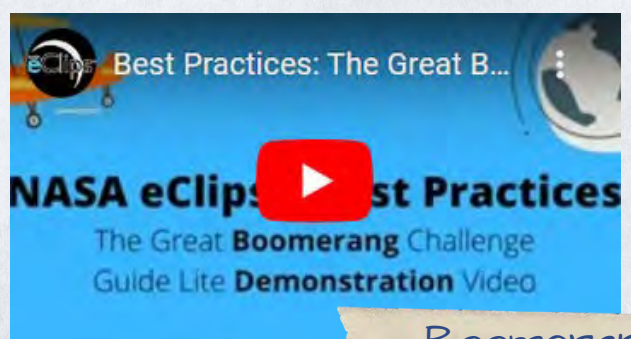
Shower Clock
Overview



Shower Clock
Demo



Boomerang
Overview



Boomerang
Demo



OPPORTUNITIES

SAVE THE DATE!
APRIL 18, 2023

Student Earth Day Presentations

Sign up to have YOUR students present activities during our 2023 Earth Day Celebration.

Last year students shared their Earth-focused projects and led hands-on activities with more than 500 participants across the country.



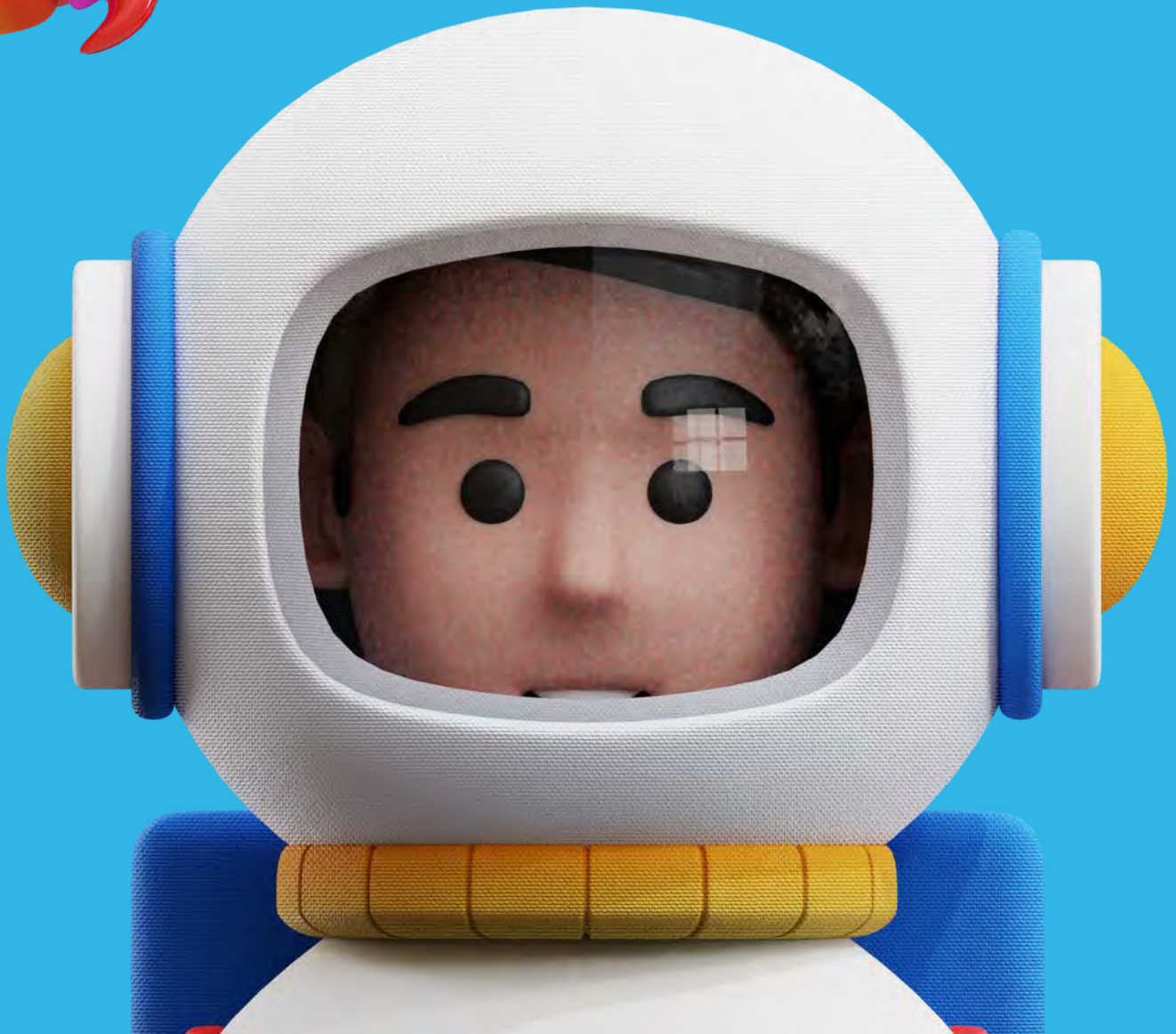
RSVP Now!



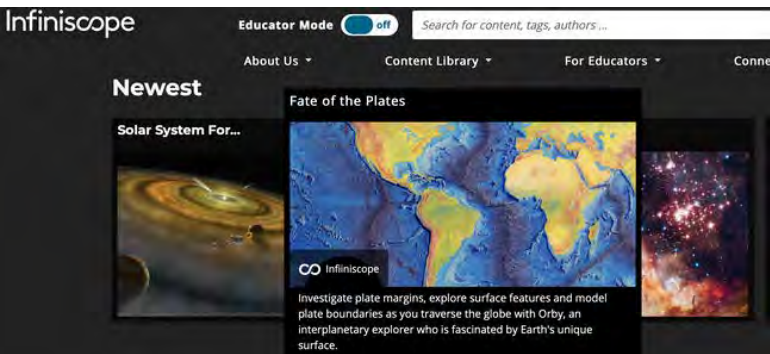
We Want To Hear From You!

Please fill out this brief
one-minute survey!

[CLICK HERE](#)



PARTNER RESOURCES



Infinscope Fate of the Plates

Investigate plate margins, explore surface features and model plate boundaries as you traverse the globe with Orby, an interplanetary explorer who is fascinated by Earth's unique surface.

GLOBE Observer

Help NASA keep an eye on clouds using the GLOBE Observer App. When your observations are matched to satellite data, you are helping capture a complete view of the complexity of the atmosphere.



NeMO-Net

In this game, players help NASA classify coral reefs by painting 3D and 2D images of coral. Players can also rate the classifications of other players and level up in the food chain as they explore and classify coral reefs and other shallow marine environments and creatures from locations all over the world!



Climate Kids

See into the past and ahead to the future with the Climate Time Machine! The visualization tool allows you to explore images of Earth and track changes over time.



Stay connected with NASA eClips and NASA!

Share what YOU'RE doing in your classroom by tagging us!



NASA eClips @NASA_eClips

This shot deserves a Silver Snoopy Award! Watching [#AstronautSnoopy](#) prep for flight at the [@Macys](#) Thanksgiving Day Parade 2022. This famous beagle has helped [@NASA](#) share safety and human space flight awareness for decades [#macysparade](#) [#NASAeClips](#) [space.com/snoopy-nasa-ar...](#)

0:04 269 views

12:01 PM - Nov 24, 2022 - Twitter Web App

The screenshot shows a tweet from the official NASA eClips Twitter account. The tweet text is as above. Below the text is a video player showing a large, colorful parade float of Snoopy in a red astronaut suit. The video has a duration of 0:04 and 269 views. At the bottom of the screenshot, it shows the time and date: 12:01 PM - Nov 24, 2022 - Twitter Web App.

CONNECT WITH US



@NASA_eClips



NASAeClips