


## NASA eClips™ and the Fairchild Tropical Botanic Garden Announce the NASA Spotlite Video Design Challenge: Can Plants Dance?


**The challenge:** As botanists, or someone who studies plants, your challenge is to gather and share evidence to confront the misconception that plants can't move. Create a video that captures your questions and findings.

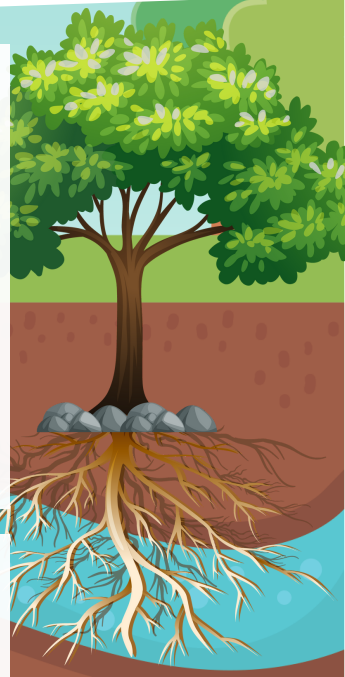
**Follow these steps to think and act like scientists as you dig through data and experiment to support a claim that confronts a misconception.**

**Misconception: Plants can't move.**

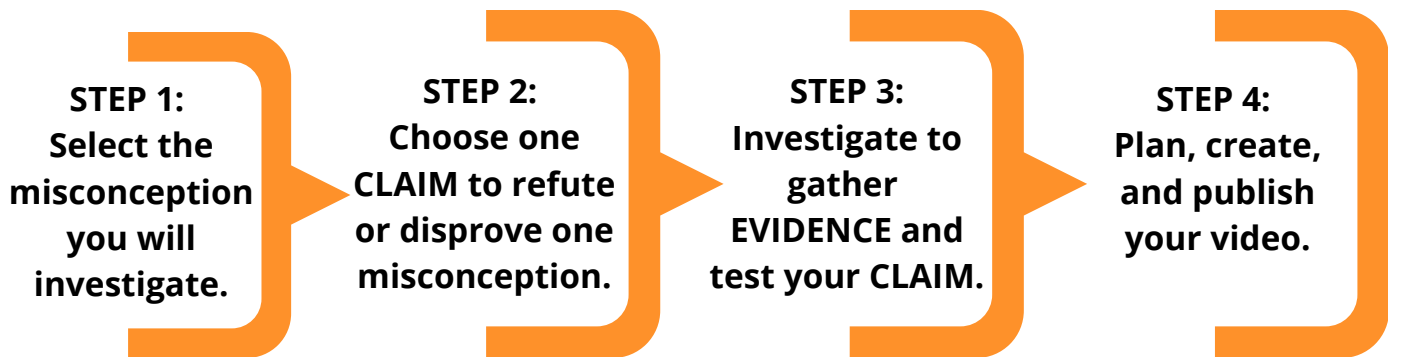
**CLAIM 1:** Some plants move in response to light. 

**CLAIM 2:** Gravity influences some plants' movement. 

**CLAIM 3:** Some plants move toward water. 



### Steps to produce a NASA Spotlite



### What is a NASA Spotlite video? How are they used?

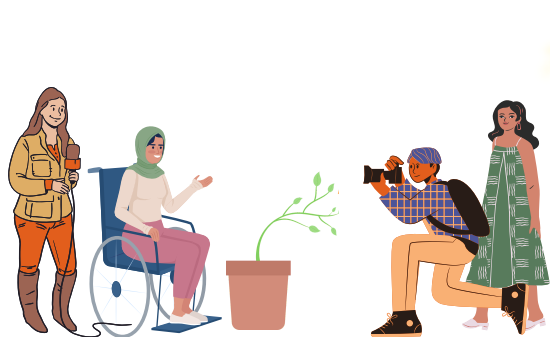
NASA Spotlites are 90 to 120-second videos that are written, filmed, edited, and produced by students using the Engineering Design Process. Approved videos, that meet all criteria, will be added to and featured on the NASA eClips™ website.

### Why does NASA want videos?

One of NASA's goals is to improve scientific literacy, or the understanding of science. Creating Spotlite videos helps change students' misconceptions about topics in science. Spotlites include demonstrations and encourage others to try related science activities to build their content knowledge.

### Who can participate?

The challenge is for students in grades 6 through 12. Students age 13 and older may appear on camera. Students younger than age 13 may still participate in all other aspects of the project, but they cannot be in front of the camera.



### Project Timeline



### INTERESTED? JOIN ONE OF OUR WEBINARS TO LEARN MORE!

To learn more, attend one of the NASA Spotlite Informational Webinars for sponsors of student production teams. These are open to both youth and parents!

**Date:** Thursday, January 11  
**Time:** 11:00 am - 12:00 pm (ET)

**Date:** Thursday, January 11  
**Time:** 6:00 - 7:00 pm (ET)

[Register Here](#) 

**We hope to see you at one of the webinars!**

If you have any questions, please feel free to reach out to our Teams:

**Fairchild Program** ([challenge@fairchildgarden.org](mailto:challenge@fairchildgarden.org))

**NASA eClips™ Program** ([nasaclips@nianet.org](mailto:nasaclips@nianet.org))